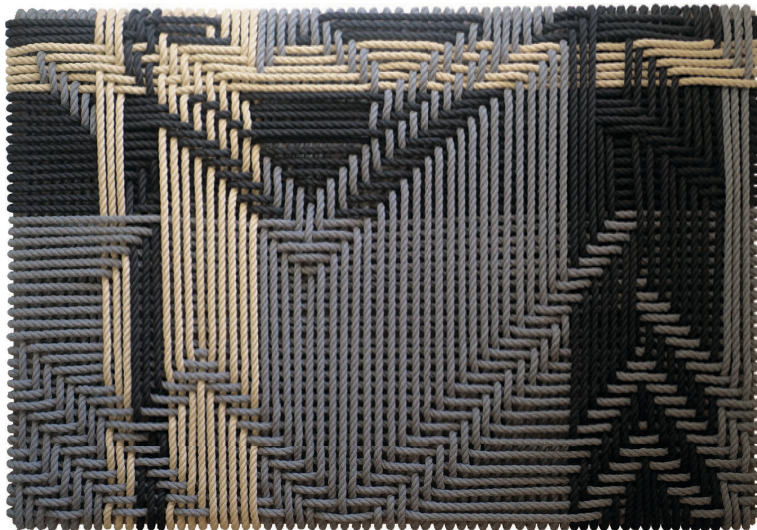
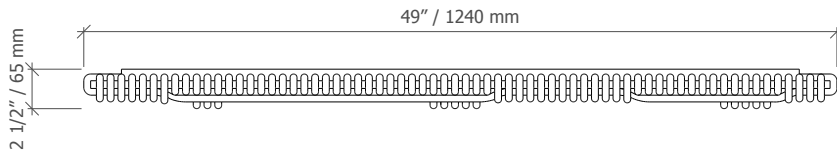
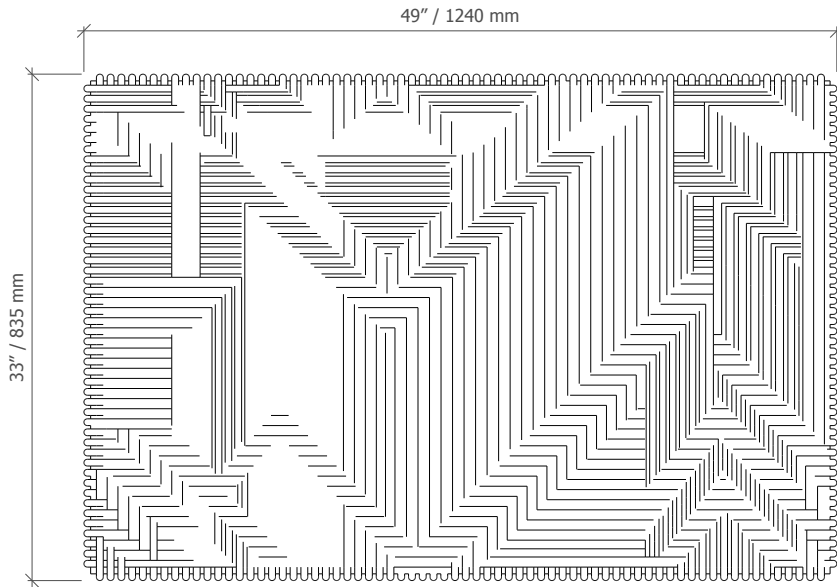




# BROCOLOCO

# WOVENWALL™ | Series 2 | Panels

## Specification Sheet



<b>Intended Use</b>	Mount on wall as décor, wall finish and sound absorption aid / optional ceiling suspension
<b>Finish</b>	Black, grey, tan hemp / Various other color options
<b>Primary Material</b>	Cotton, natural hemp / wood
<b>Mounting System</b>	<u>Wall</u> : French cleats (included) / vertical or horizontal <u>Ceiling</u> : D-rings on frame corners can tie to aircraft cable (not included) or link into ceiling hooks
<b>Dimensions</b>	33" (W) x 49" (H) x 2 1/2" (D) / 835 mm (W) x 1240 mm (H) x 65 mm (D)
<b>Weight</b>	33 lbs / 15 kg
<b>Origin</b>	USA / Houston, TX / Charleston, SC
<b>Handcrafted</b>	Yes / American materials
<b>Customizable</b>	Dimensions according to wall size / accent color
<b>Fabric Guard (add on)</b>	Stain repellent / non-toxic, non-flammable, non-aerosol (not a waterproofing application)
<b>Fire Treatment (add on)</b>	Class 'A' applicant meets NFPA 701, ASTM E84/UL 723, California Title 19 / non-toxic mineral compound
<b>Sustainability</b>	95% biodegradable natural materials / low VOCs / no off-gassing / responsibly forested N. American wood (no formaldehyde) / American cotton
<b>3D / 2D Files</b>	<a href="http://brocoloco.com/specifications-and-3d-files">brocoloco.com/specifications-and-3d-files</a>
<b>Contact</b>	<a href="mailto:info@brocoloco.com">info@brocoloco.com</a> / +1-844-444-5969