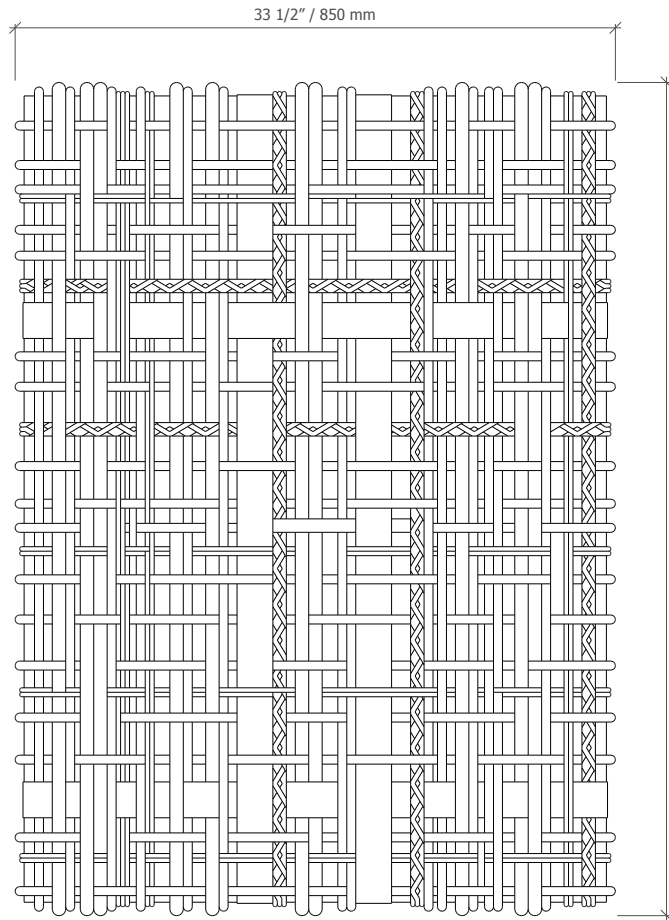
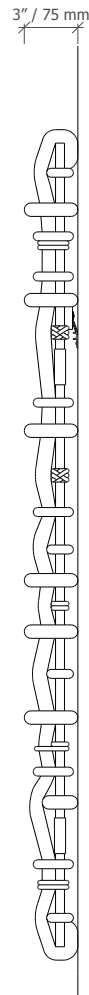


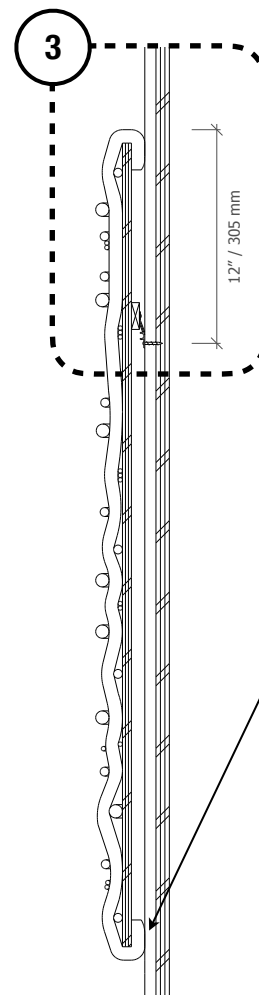
NOTE: You will need about a 1" (25mm) clearance to lift panel up onto the wall mounted cleat. This means if you are mounting at the top of a ceiling, the panels will need a minimum 1" (25mm) between the top of the rope and the ceiling.



1 FRONT ELEVATION
SCALE: N/A



2 SIDE ELEVATION / SECTION
SCALE: N/A



NOTE: If security hardware was requested, included connector will be here, centered to front face of panel. Anchor the included screw to wall at 1 3/8" (35 mm) above lowest rope edge, or mark location with pencil after hanging panel, remove panel, install screw, then rehang panel.

- French cleat (included)
- Walldog screw (included)
- Drywall
- Rope
- Plywood backer board (optional)

3 DETAIL
SCALE: N/A

NOTE: Center the holes of the included wall mounting cleat at 12" (305 mm) lower than where you want the top of the rope panel to be positioned.



BROCOLOCO

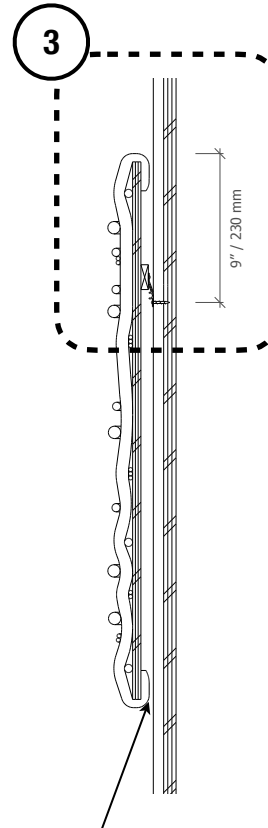
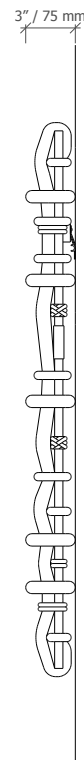
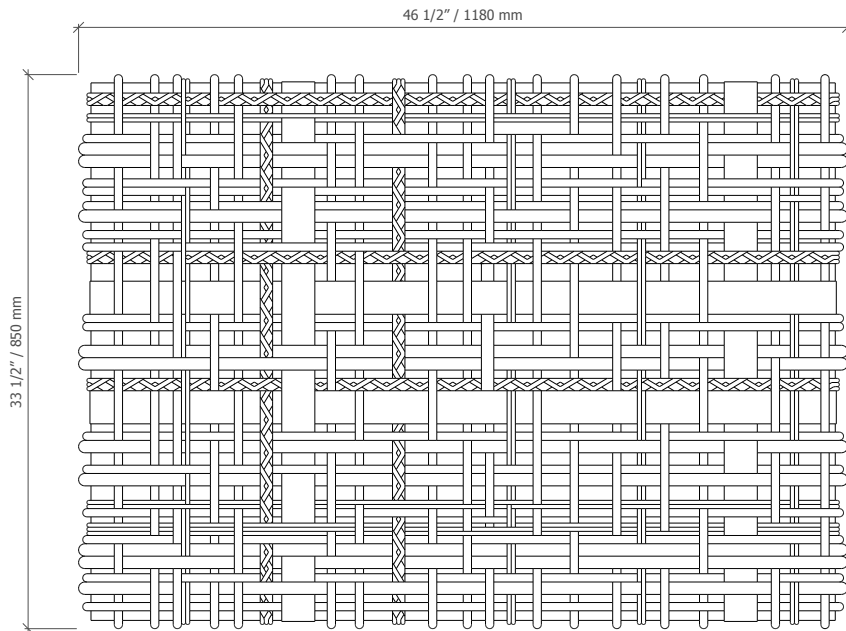
WOVENWALL™ Rope Panels

Vertical orientation // wall mounting instructions.

Maintenance: blow free of dust with compressed air or vacuum occasionally.

01

NOTE: You will need about a 1" (25mm) clearance to lift panel up onto the wall mounted cleat. This means if you are mounting at the top of a ceiling, the panels will need a minimum 1" (25mm) between the top of the rope and the ceiling.



French cleat
(included)

Walldog screw
(included)

Drywall

Rope

Plywood
backer board
(optional)

9" / 230 mm

NOTE: Center the holes of the included wall mounting cleat at 9" (230 mm) lower than where you want the top of the rope panel to be positioned.

NOTE: If security hardware was requested, included connector will be here, centered to front face of panel. Anchor the included screw to wall at 1 3/8" (35 mm) above lowest rope edge, or mark location with pencil after hanging panel, remove panel, install screw, then rehang panel.

1

FRONT ELEVATION

SCALE: N/A

2

SIDE ELEVATION / SECTION

SCALE: N/A

3

DETAIL

SCALE: N/A



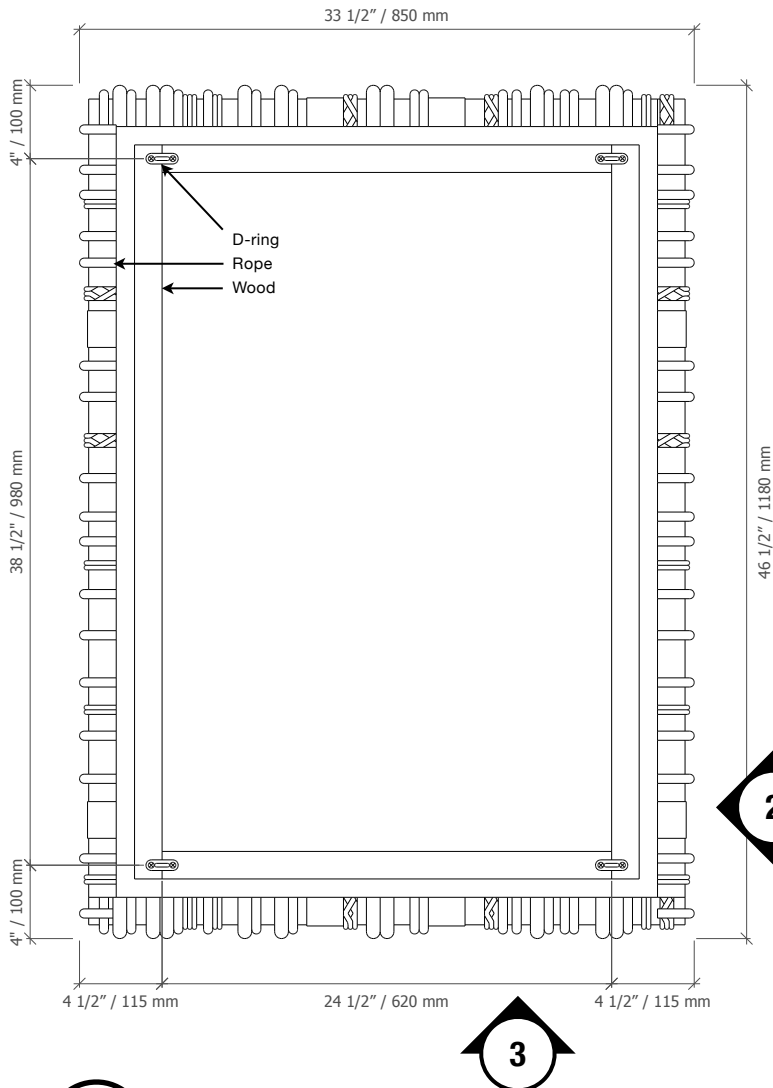
BROCOLOCO

WOVENWALL™ Rope Panels

Horizontal orientation // wall mounting instructions.

Maintenance: blow free of dust with compressed air or vacuum as needed.

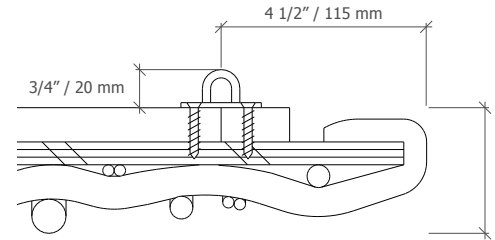
02



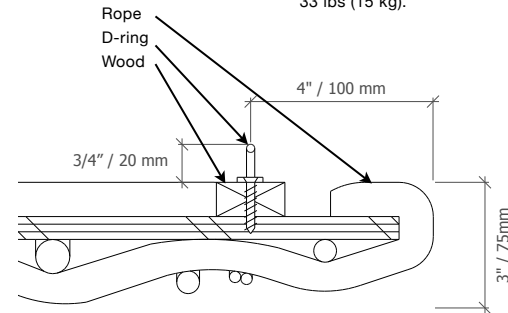
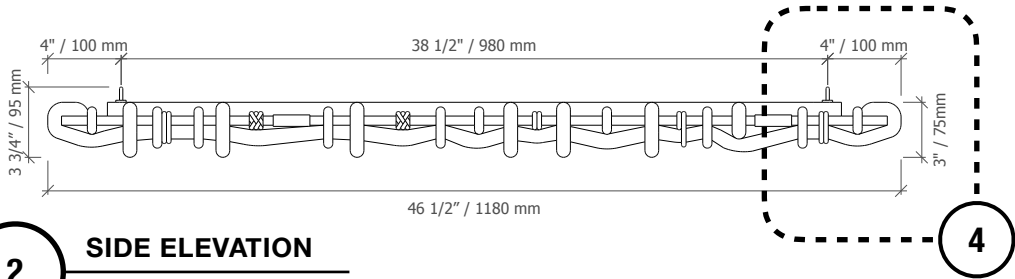
1 TOP VIEW
SCALE: N/A

2 SIDE ELEVATION
SCALE: N/A

3 SIDE ELEVATION
SCALE: N/A



4 DETAIL
SCALE: N/A



5 DETAIL
SCALE: N/A

NOTE: A number of hardware solutions will work for connecting the panel's d-rings to the ceiling, such as using aircraft cable for a suspended mount or using an eye-hook screwed into blocking for more of a flush mount. A screw-eye and toggle bolt setup may be possible for a drywall ceiling. Make sure all hardware and systems are sufficient for a minimum standard panel weight of 33 lbs (15 kg).



BROCOLOCO

WOVENWALL™ Rope Panels

Suspended orientation // ceiling mounting instructions.

Maintenance: blow free of dust with compressed air or vacuum occasionally.

03